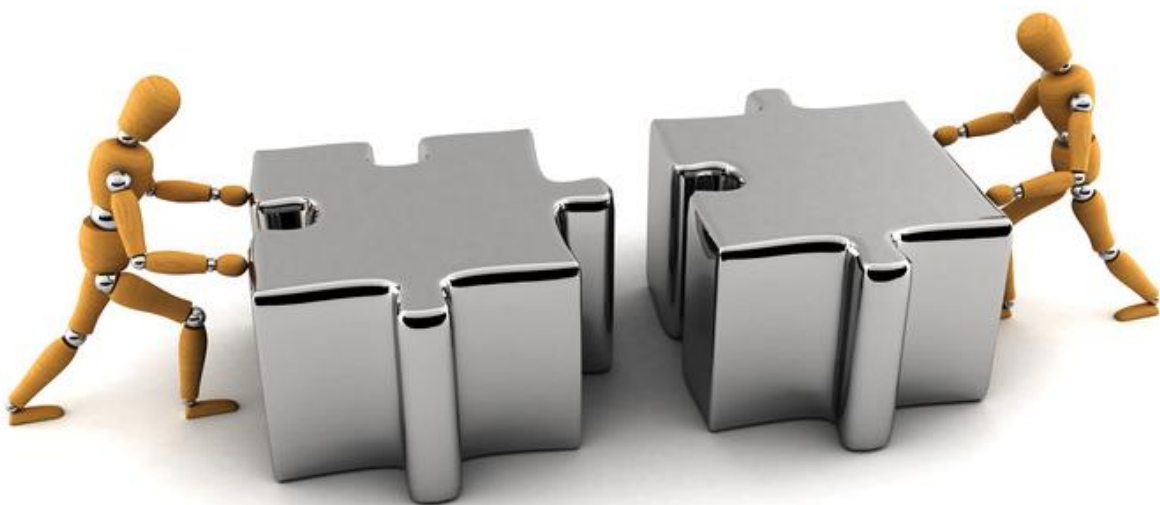


Finally...One company that can bring all  
the pieces of the puzzle together!

**elexacom**



ELECTRICAL & DATA  
CCTV & ACCESS CONTROL  
TELEPHONE SYSTEMS  
SECURITY ALARMS

**Elexacom is one of Perth's leading providers of Electrical, Data, CCTV, Access Control, Telephone and Alarm System services. Our experienced team can assist with the design, supply, implementation and ongoing support of your project.**

## **ELECTRICAL & DATA**

Elexacom can help with all your power, lighting and data requirements from the installation of an additional power points to the complete electrical and data fit-out of a new building.

## **CCTV & ACCESS CONTROL**

Elexacom are the experts in the new breed of IP based CCTV systems and integrated components. Our team of highly trained technicians and security consultants can customise a solution specific to your needs.

We are not tied to any brand or product type and as such we assess your security requirements and can design a solution that is right, just for you.

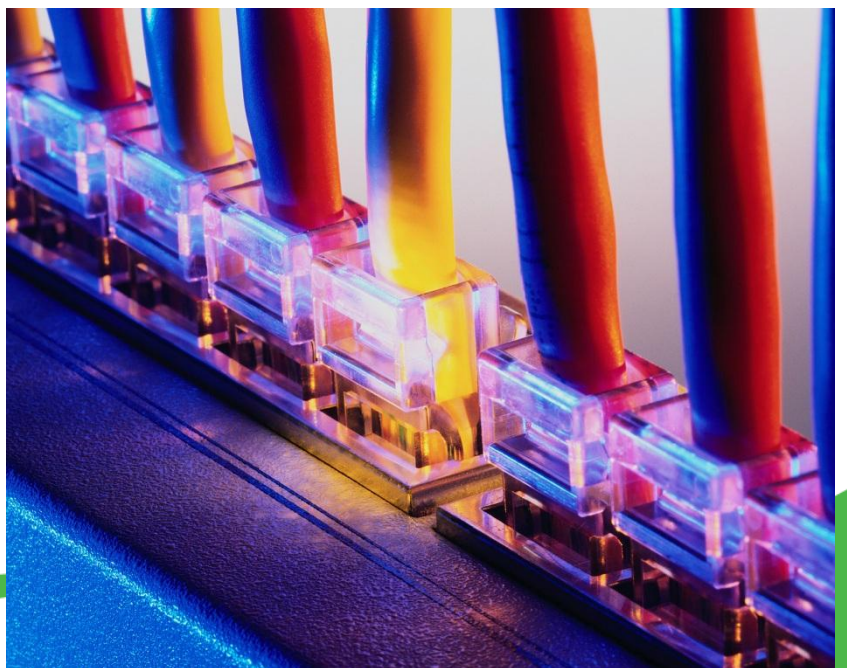
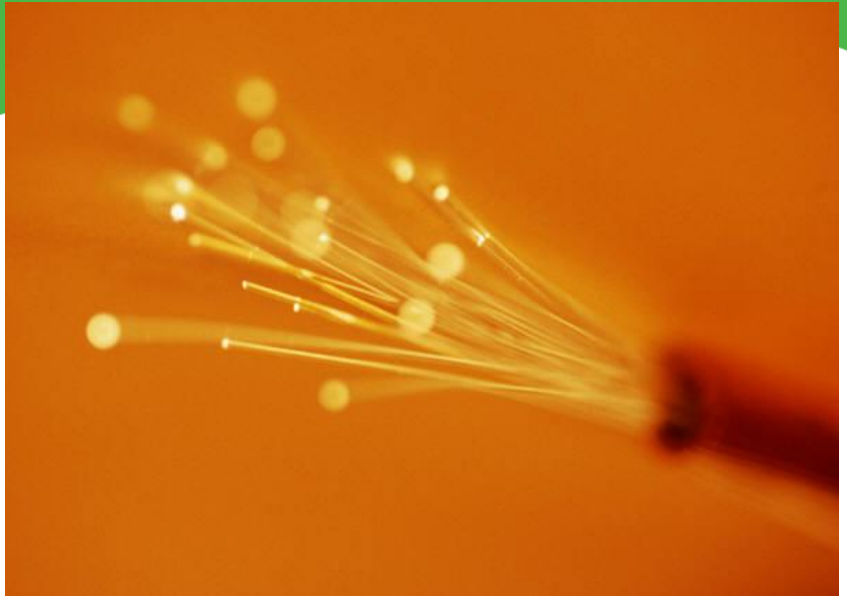
We are Axis Communications authorised Partners, Milestone Advanced Partners and can provide a wide variety of budget to premium high resolution IP cameras and recording servers.

## **TELEPHONE SYSTEMS**

Whether you are looking to change the configuration of your existing PABX telephone systems or install a new VOIP or Hybrid system than we can design a system that is right for you.

## **SECURITY ALARMS**

Utilising the best products on the market Elexacom can design and install a system that that is right for your business and which will give you piece of mind.





Our team has a broad range of experience and expertise, which enables us to be able to tackle a range of products from general maintenance right through to large and complex projects requiring an extensive range of skills.

## COMMERCIAL & INDUSTRIAL

We provide first-class electrical services to businesses, government departments, facilities, factories, manufacturing plants, councils across Western Australia. No matter how challenging the project.

## PREVENTATIVE AND REACTIVE MAINTENANCE

We are able to provide a range of maintenance services including preventative maintenance such as:

- Safety Switch (RCD) Testing
- Equipment Testing and Tagging
- Switchboard Thermal Scanning
- Emergency and Exit Light Testing
- Data network testing
- Uninterrupted Power Supply (UPS) testing

In addition, we have team of technicians available to manage all types of reactive electrical maintenance.

## BUILDING FITOUTS

Our broad range of in-house skills makes Elexacom the logical choice when it comes to shop or office fit-outs. We are able to coordinate service such as electrical, data, security, access control and telephone system right from our in-house team of technicians.

## DATA & COMMUNICATIONS

Whether you need one telephone point or a mission-critical network or fibre optical system rollout Elexacom can assist. Our team is ready to deliver the high quality of workmanship that your data or communications network demands.





# elexacom



Elexacom

2 Harvard Way,  
CANNING VALE WA 6155  
TELEPHONE 08 9330 4592  
FAX 08 9317 3386  
EMAIL [admin@elexacom.com.au](mailto:admin@elexacom.com.au)  
WEB [www.elexacom.com.au](http://www.elexacom.com.au)  
EC 9836